



Mellview House, M1 Retail Park, Drogheda, Co Louth

2<sup>nd</sup> November 2011

## **Artist Tender - November 2010**

### **Context**

Coca-Cola are planning to relocate their operations to a new, modern office facility in Drogheda. This facility will be home to up to 200 professionals, working in the realms of Finance, Legal, Logistics, Commercialisation, HR, Procurement SAP Global Support and IT.

### **Brief**

Coca-Cola would like to commission a local Artist to create a work for the Reception Area. This work can be stand alone, or built into a wall / desk area.

Coca-Cola would like this piece of work to be contemporary, be informed by the Irish location, and also the Company's Mission Statement: -

*At the Coca-Cola Company, we strive to refresh the world,  
inspire moments of optimism and happiness, create value and  
make a difference.*

The commissioned Artist will be experienced in delivering complete projects in a fit-out / construction environment and will demonstrate their ability to facilitate high quality outcomes working with a specific commercial brief (within a tight deadline). The disciplines we imagine the Artist team will offer may include: glass, metal, textile, ceramic or paint, however, we are open to proposals from all disciplines and will consider applications on the basis of meeting the aims of the project.

Coca-Cola would like to commission an Artist to deliver this exciting project between December 2010 and February 2011.

### **Project aims**

- Create innovative artwork for a reception area that celebrates a distinctive sense of place and our Company values
- Enhance employee and visitor experience of the Reception
- Make use of local, natural, recycled materials where appropriate.

### **Timescale**

- Tender process closes Friday 26<sup>th</sup> November.
- Shortlist and interview process complete Tuesday 7<sup>th</sup> December.
- Work to be delivered by Friday, 18<sup>th</sup> February 2011 – 10 weeks in total.

**Budget: Up to a maximum of €15,000 all inclusive**

**Area Dimensions**

The Reception Area is approx 60m<sup>2</sup>. Architectural drawings are included in Appendix 1.

**How to apply**

Please send your CV, covering letter and a detailed proposal (maximum 2 sides of A4) to the address below describing how you would approach this project. Please include examples and reviews of prior work. We would ask you to address the following points:

- How you view and approach issues of quality control in public art in the community.
- How your unique skills and experience would develop the vision for the project.

Please DO NOT send large picture files by email. Your application may not be received if your email attachments are larger than 2MB (max total size of 10MB). Send images on CD.

**The criteria against which the Project Steering Group will assess applications are as follows:**

- Proven experience of delivering successful art projects
- Vision for the delivery of project outcomes
- Proven ability to work within given budgets and timescales

**Closing Date for applications: 5:00pm Friday 26<sup>th</sup> November 2010.**

**Send your application to Áine Walsh at: [aiwalsh@eur.ko.com](mailto:aiwalsh@eur.ko.com) or by post to:**

Áine Walsh  
Beverage Business Solutions  
Mellview  
M1 Retail Park  
Drogheda, Co Louth

**If you have any queries about this tender please contact Áine Walsh by email or by telephoning 041 98 49571.**

**Reference Sites:-**

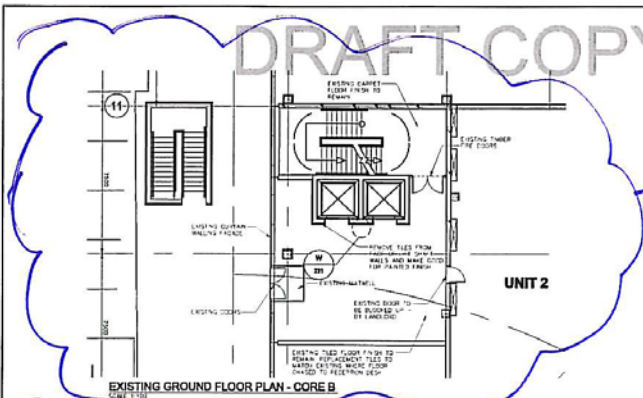
**[www.coca-cola.com](http://www.coca-cola.com)**

**[www.thecoca-colacompany.com/ourcompany/index.html](http://www.thecoca-colacompany.com/ourcompany/index.html)**

## Appendix 1

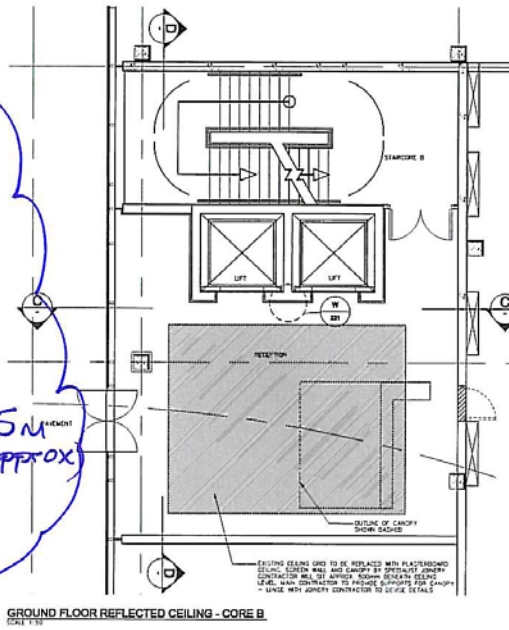
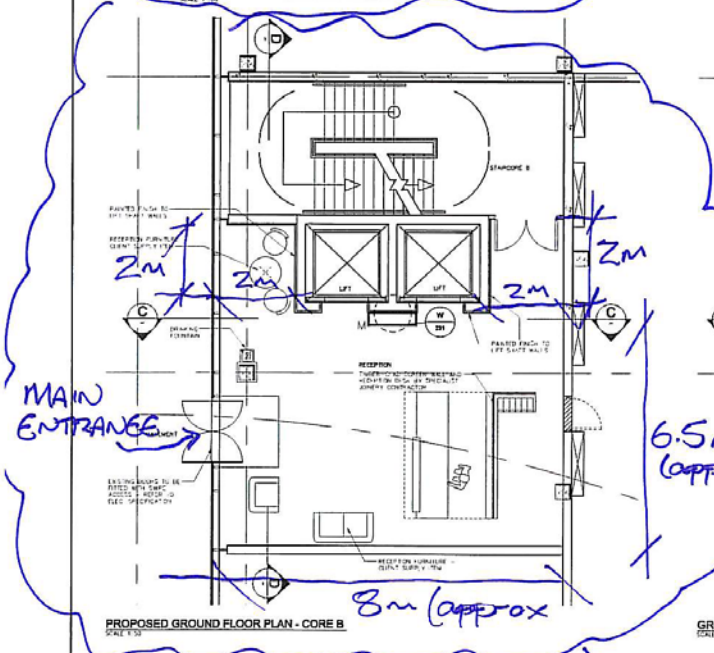
Note – graphics, furniture are architect's drawings, not yet confirmed, therefore can be worked around, depending on the Artwork.





EXISTING

SOUTHGATE OFFICES  
GROUND FLOOR  
CORE B. (NBS)



PROPOSED

